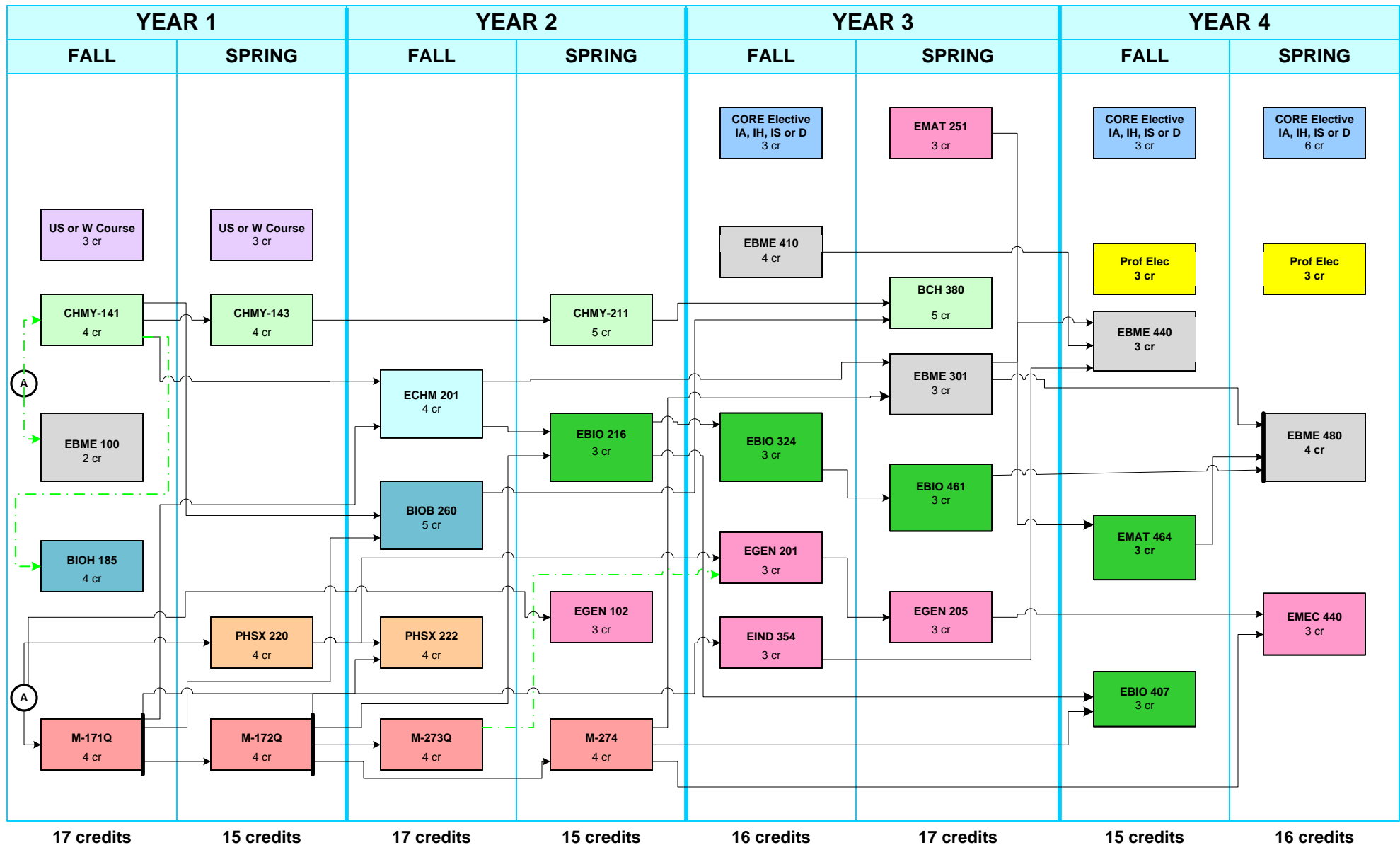


# Biomedical Engineering Flowchart

2023-24 Catalog



(A) Math Level 4 (M 151Q)

Pre-Requisite →

Co-Requisite →

rev. 10/10/2022, jjh

NOTE: This flowchart has been reviewed and updated, but there could still be errors. Please report any errors to Jeff Heys.

EBME 100: Intro to Biomed Eng  
 EBME 301: Eng Analysis of Physio Systems  
 EBME 410: Fund Bioelectronics and Bioinstrumentation  
 EBME 440: Biomedical Engineering Lab  
 EBME 480: Biomedical Engineering Design